



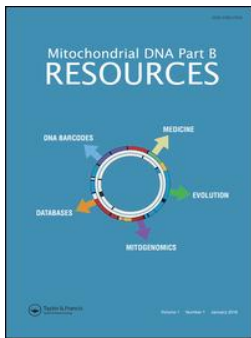
OIST

OKINAWA INSTITUTE OF SCIENCE AND TECHNOLOGY GRADUATE UNIVERSITY  
沖縄科学技術大学院大学

# The complete mitochondrial genome of the aquatic coralsnake *Micrurus surinamensis* (Reptilia, Serpentes, Elapidae)

Author	Anita de Moura Pessoa, Rhewter Nunes, Mariana Pires de Campos Telles, Koki Nishitsuji, Kanako Hisata, Steven D. Aird, Alexander S. Mikheyev, Nelson Jorge da Silva
journal or publication title	Mitochondrial DNA Part B
volume	5
number	1
page range	233-235
year	2019-12-13
Publisher	Informa UK Limited, trading as Taylor & Francis Group.
Rights	(C) 2019 The Author(s).
Author's flag	publisher
URL	<a href="http://id.nii.ac.jp/1394/00001683/">http://id.nii.ac.jp/1394/00001683/</a>

doi: info:doi/10.1080/23802359.2019.1699460



## Mitochondrial DNA Part B Resources

ISSN: (Print) 2380-2359 (Online) Journal homepage: <https://www.tandfonline.com/loi/tmdn20>

# The complete mitochondrial genome of the aquatic coralsnake *Micrurus surinamensis* (Reptilia, Serpentes, Elapidae)

Anita de Moura Pessoa, Rhewter Nunes, Mariana Pires de Campos Telles, Koki Nishitsuji, Kanako Hisata, Steven D. Aird, Alexander S. Mikheyev & Nelson Jorge da Silva Jr

To cite this article: Anita de Moura Pessoa, Rhewter Nunes, Mariana Pires de Campos Telles, Koki Nishitsuji, Kanako Hisata, Steven D. Aird, Alexander S. Mikheyev & Nelson Jorge da Silva Jr (2020) The complete mitochondrial genome of the aquatic coralsnake *Micrurus surinamensis* (Reptilia, Serpentes, Elapidae), *Mitochondrial DNA Part B*, 5:1, 233-235, DOI: [10.1080/23802359.2019.1699460](https://doi.org/10.1080/23802359.2019.1699460)

To link to this article: <https://doi.org/10.1080/23802359.2019.1699460>



© 2019 The Author(s). Published by Informa UK Limited, trading as Taylor & Francis Group.



Published online: 13 Dec 2019.



Submit your article to this journal [↗](#)



Article views: 292




View related articles [↗](#)



View Crossmark data [↗](#)

## The complete mitochondrial genome of the aquatic coralsnake *Micrurus surinamensis* (Reptilia, Serpentes, Elapidae)

Anita de Moura Pessoa<sup>a</sup>, Rhewter Nunes<sup>b</sup>, Mariana Pires de Campos Telles<sup>a,b,c</sup>, Koki Nishitsuji<sup>d</sup>, Kanako Hisata<sup>d</sup>, Steven D. Aird<sup>e,f</sup>, Alexander S. Mikheyev<sup>f</sup>  and Nelson Jorge da Silva Jr<sup>a,c,g</sup>

<sup>a</sup>Programa de Pós-Graduação em Biotecnologia e Biodiversidade, Universidade Federal de Goiás, Goiânia, Brasil; <sup>b</sup>Laboratório de Genética & Biodiversidade, Departamento de Genética, Instituto de Ciências Biológicas, Universidade Federal de Goiás, Goiânia, Brasil; <sup>c</sup>Escola de Ciências Agrárias e Biológicas, Pontifícia Universidade Católica de Goiás, Goiânia, Brasil; <sup>d</sup>Marine Genomics Unit, Okinawa Institute of Science and Technology Graduate University, Okinawa-ken, Japan; <sup>e</sup>Division of Faculty Affairs, Okinawa Institute of Science and Technology Graduate University, Okinawa-ken, Japan; <sup>f</sup>Ecology and Evolution Unit, Okinawa Institute of Science and Technology Graduate University, Okinawa-ken, Japan; <sup>g</sup>Programa de Pós-Graduação em Ciências Ambientais e Saúde, Escola de Ciências Médicas, Biomédica e Farmacêuticas, Pontifícia Universidade Católica de Goiás, Goiânia, Brasil

### ABSTRACT

In this study, we report the first complete mitochondrial genome sequence of the Aquatic Coralsnake *Micrurus surinamensis*. The mitochondrial genome length is 17,375 bp, comprising 13 protein-coding genes, 2 rRNA (12S and 16S) and 22 tRNA, as well as two typical control regions. Phylogenetic analysis based upon 13 protein-coding genes showed clusters based on terrestrial and marine species.

### ARTICLE HISTORY

Received 19 November 2019  
Accepted 23 November 2019

### KEYWORDS

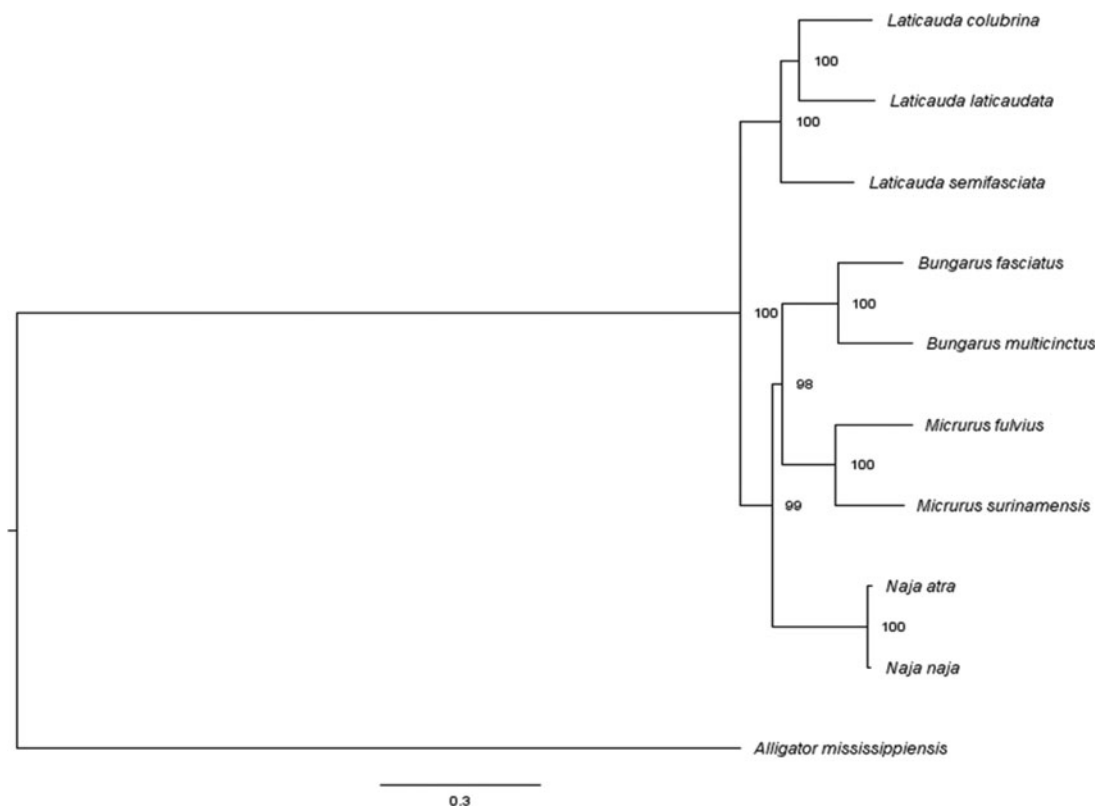
Mitochondrion; elapid snakes; Snake genomics

*Micrurus* is a genus of New World coralsnakes that includes 84 species at present. *Micrurus surinamensis* is the only aquatic species, with a distinct venom composition owing to its peculiar diet of fish (Aird and Silva Jr 2016; Silva Jr et al. 2018). The venom is rich in three-finger toxins (3FTxs) and presents high neurotoxic activity (Aird et al. 2017).

From a specimen of *M. surinamensis* of Altamira (Pará – Brazil; 3°20'14"N and 51°48'16"E) collected on 9 June 2014, we extracted total DNA using the chloroform–phenol protocol (Sambrook et al. 1989). The specimen is deposited in the herpetological collection of the Center for Biological Studies and Research of PUC-Goiás (CEPB 8984). Sequencing was performed using the Illumina MiSeq platform (309 × 2-bp reads). A paired-end library was prepared using a TruSeq DNA PCR-Free LT Sample Prep Kit (Illumina). The assembly was constructed using NOVOPlasty in 'mitochondrial' mode (Dierckxsens et al. 2017). Genome annotation was performed using MITOS webserver (Bernt et al. 2013) and the phylogenetic analysis was performed using 13 mitochondrial protein-coding genes. These genes were aligned individually using MAFFT v. 7 (Katoh and Standley 2013). Alignment files were concatenated into a single matrix using Sequence Matrix software (Vaidya et al. 2011). Informative sites were extracted from this matrix

using GBLOCKS v. 0.91 (Cruickshank 2000) and were used as input for jModelTest v. 2.1.10 (Darriba et al. 2012) to test the best-fitting evolutionary model for phylogeny estimation, based on the Akaike Information Criterion (AIC). Bayesian inference approach using MrBayes v. 3.2 software with 30,000,000 generations in MCMC runs was analyzed (Huelsenbeck and Ronquist 2001; Darling et al. 2012). Runs were evaluated using Tracer software (tree.bio.ed.ac.uk).

The *M. surinamensis* mitochondrial genome comprises 17,375 bp. It consists of 13 protein-coding genes, 2 rRNA (12S and 16S), and 22 tRNA genes, and two control regions typical of snake mitochondrial genomes. This genome has a composition of 27.5% A, 33.1% T, 27.5% G, and 12.0% C. A phylogenetic analysis was performed based on available sequences in GenBank, using the *Alligator mississippiensis* mitochondrial genome as an outgroup (Figure 1). Three clades (*Bungarus*, *Micrurus* and *Naja*) represented terrestrial elapids and *Laticauda* exemplified aquatic elapids. Among terrestrial elapids *Bungarus* is a sister group of *Micrurus* with *Naja* as an outgroup, all with highly supported nodes, and patterns identical to those reported previously (Kim et al. 2018; Yi et al. 2019). The complete mitochondrial genome sequence of *Micrurus surinamensis* has been deposited in GenBank (accession number: MN587874).



**Figure 1.** Bayesian phylogenetic tree constructed using 13 protein-coding genes from complete mitochondrial genomes. *Alligator mississippiensis* was used as outgroup. Genbank accession numbers: *Laticauda colubrina* (KY496324.1), *Laticauda laticaudata* (KY496323.1), *Laticauda semifasciata* (KY496325.1), *Bungarus fasciatus* (EU579523.1), *Bungarus multicinctus* (EU579522.1), *Micrurus fulvius* (GU045453.1), *Micrurus surinamensis* (this work), *Naja atra* (EU913475.1), *Naja naja* (DQ343648.1), and *Alligator mississippiensis* (AKHW00000000.3).

Based upon mitochondrial genomes, *Micrurus surinamensis* is clustered with *Micrurus fulvius*, as predicted they represent two different but related clades among New World coral-snakes (Roze 1996; Silva Jr and Sites 2001; Silva Jr et al. 2016).

## Acknowledgements

We thank 'Rede Genética Geográfica e Planejamento Regional para Conservação de Recursos Naturais no Cerrado' (GENPAC), especially GENPAC 4 under the project 'Modelos de nicho ecológico, distribuição potencial e o efeito de mudanças climáticas em espécies do Cerrado', and GENPAC 14, under the project 'Filogeografia e diversidade taxinológica de *Micrurus* (Serpentes, Elapidae) na área de contato Cerrado-Amazônia – Caatinga' (calling MCT/CNPq/FNDCT/FAPs/MEC/CAPES/PRO-CENTRO-OESTE no. 031/2010).

## Disclosure statement

No potential conflict of interest was reported by the authors.

## Funding

LCT and NJSJr's research is supported by Conselho Nacional de Desenvolvimento Científico e Tecnológico (CNPq) productivity grants [Processes 306418/2013-4 and 309443/2013-0, respectively]. The research by CTC was supported by the Institutional Program of Scientific Initiation of UFG and CNPq Registration in the Sistema Nacional de Gestão do Patrimônio Genético e do Conhecimento Tradicional Associado no. AB3953F. RN received a grant from the National Institute of Science and Technology – Ecology, Evolution and Conservation of Biodiversity.

## ORCID

Alexander S. Mikheyev  <http://orcid.org/0000-0003-4369-1019>

## References

- Aird SD, Silva NJ Jr 2016. Química dos venenos de cobras-coraís. In: Silva NJ Jr, editor. As cobras-coraís do Brasil. Biologia, taxonomia, venenos e envenenamentos. Goiânia: Editora PUC Goiás; p. 242–301.
- Aird SD, Silva NJ Jr, Qiu L, Villar-Briones A, Saddi VA, Telles MPC, Grau M, Mikheyev AS. 2017. Coralsnake venomomics: analyses of venom gland transcriptomes and proteomes of six Brazilian taxa. *Toxins* (Basel). 9(6):187.
- Bernt M, Donath A, Jühling F, Externbrink F, Florentz C, Fritsch G, Pütz J, Middendorf M, Stadler PF. 2013. MITOS: improved de novo metazoan mitochondrial genome annotation. *Mol Phylogenet Evol.* 69(2): 313–319.
- Cruickshank R. 2000. Selection of conserved blocks from multiple alignments for their use in phylogenetic analysis. *Mol Biol Evol.* 17: 540–552.
- Darling A, Ronquist F, Ayres DL, Larget B, Liu L, Teslenko M, Suchard MA, Huelsenbeck JP, Höhna S, van der Mark P. 2012. MrBayes 3.2: efficient bayesian phylogenetic inference and model choice across a large model space. *Syst Biol.* 61:539–542.
- Darriba D, Taboada GL, Doallo R, Posada D. 2012. JModelTest 2: more models, new heuristics and parallel computing. *Nat Methods.* 9(8):772.
- Dierckxnsens N, Mardulyn P, Smits G. 2017. NOVOPlasty: de novo assembly of organelle genomes from whole genome data. *Nucleic Acids Res.* 45(4):e18.
- Huelsenbeck JP, Ronquist F. 2001. MrBAYES: bayesian inference for phylogeny. *Bioinformatics.* 17(8):754–755.
- Katoh K, Standley DM. 2013. MAFFT multiple sequence alignment software version 7: improvements in performance and usability. *Mol Biol Evol.* 30(4):772–780.
- Kim IH, Park J, Suk HY, Bae HG, Min MS, Tsai TS, Park D. 2018. Phylogenetic relationships of three representative sea krait species (genus *Laticauda*; Elapidae; Serpentes) based on 13 mitochondrial genes. *Mitochondrial DNA A.* 29(5):772–777.

- Roze JA. 1996. Coral snakes of the Americas: biology, identification, and venoms. Malabar (FL): Krieger Publishing Company.
- Sambrook J, Fritsch EF, Maniatis T. 1989. Molecular cloning: a laboratory manual. 2nd ed. New York: Cold Spring Harbor Laboratory Press.
- Silva FM, Prudente ALC, Machado FA, Santos MM, Zaher H, Hingst-Zaher E. 2018. Aquatic adaptations in a Neotropical coral snake: A study of morphological convergence. *J Zool Syst Evol Res.* 56(3):382–394.
- Silva NJ Jr, Pires MG, Feitosa DT. 2016. Diversidade das Cobras-Corais do Brasil. In: Silva NJ Jr, editor. *As Cobras-Corais do Brasil: biologia, taxonomia, venenos e envenenamentos.*, Goiânia (Brazil): Editora PUC Goiás; p. 78–167
- Silva NJ Jr, Sites JW. 2001. Phylogeny of South American triad coral snakes (Elapidae: *Micrurus*) based on molecular characters. *Herpetologica.* 57:1–22.
- Vaidya G, Lohman DJ, Meier R. 2011. SequenceMatrix: Concatenation software for the fast assembly of multi-gene datasets with character set and codon information. *Cladistics.* 27(2):171–180.
- Yi CH, Park J, Sasai T, Kim HS, Kim JG, Kim MS, Cho IY, Kim IH. 2019. Complete mitochondrial genome of the Ijima's Sea Snake (*Emydocephalusijimae*) (Squamata, Elapidae). *Mitochondrial DNA Part B.* 4(2):2658–2659.