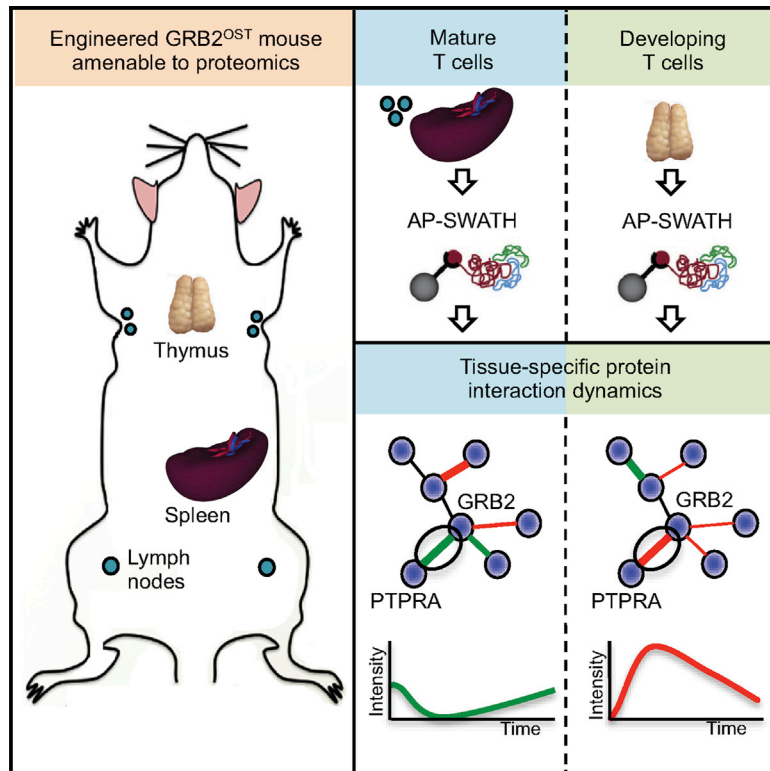


Cell Reports

Precise Temporal Profiling of Signaling Complexes in Primary Cells Using SWATH Mass Spectrometry

Graphical Abstract



Authors

Etienne Caron, Romain Roncagalli, Takeshi Hase, ..., Ruedi Aebersold, Bernard Malissen, Matthias Gstaiger

Correspondence

bernardm@ciml.univ-mrs.fr (B.M.), matthias.gstaiger@imsb.biol.ethz.ch (M.G.)

In Brief

Caron et al. apply an advanced workflow that combines mouse genetic engineering, affinity purification-SWATH mass spectrometry, and open-source software platforms to accurately and reproducibly quantify high-confidence, time-resolved protein interactions in primary T cells isolated from mouse tissues.

Highlights

- Temporal proteomic profiling in primary cells using DIA/SWATH mass spectrometry
- Identification of GRB2 interactors in primary T cells
- Developing and mature T cells show distinct dynamics of GRB2 protein interactions
- Broad applicability of our workflow for dissecting mammalian signaling systems

Accession Numbers

PXD003973
PXD003972



Precise Temporal Profiling of Signaling Complexes in Primary Cells Using SWATH Mass Spectrometry

Etienne Caron,^{1,10} Romain Roncagalli,^{2,10} Takeshi Hase,³ Witold E. Wolski,⁴ Meena Choi,⁵ Marisa G. Menoita,² Stephane Durand,² Antonio García-Blesa,² Ivo Fierro-Monti,¹ Tatjana Sajic,¹ Moritz Heusel,¹ Tobias Weiss,⁶ Marie Malissen,² Ralph Schlapbach,⁴ Ben C. Collins,¹ Samik Ghosh,³ Hiroaki Kitano,^{3,7} Ruedi Aebersold,^{1,8} Bernard Malissen,^{2,9,*} and Matthias Gstaiger^{1,11,*}

¹Department of Biology, Institute of Molecular Systems Biology, ETH Zurich, 8093 Zurich, Switzerland

²Centre d'Immunologie de Marseille-Luminy, Aix Marseille Université, INSERM, CNRS, 13288 Marseille, France

³The Systems Biology Institute, Tokyo 108-0071, Japan

⁴Functional Genomics Center Zurich, ETH Zurich and University of Zurich, 8057 Zurich, Switzerland

⁵College of Science, College of Computer and Information Science, Northeastern University, Boston, MA 02115, USA

⁶Department of Neurology and Brain Tumor Center, University Hospital Zurich and University of Zurich, 8091 Zurich, Switzerland

⁷Okinawa Institute of Science and Technology Garuda School, 904-0495 Okinawa, Japan

⁸Faculty of Science, University of Zurich, 8006 Zurich, Switzerland

⁹Centre d'Immunophénomique, Aix Marseille Université, INSERM, CNRS, 13288 Marseille, France

¹⁰Co-first author

¹¹Lead Contact

*Correspondence: bernardm@ciml.univ-mrs.fr (B.M.), matthias.gstaiger@imsb.biol.ethz.ch (M.G.)

<http://dx.doi.org/10.1016/j.celrep.2017.03.019>

SUMMARY

Spatiotemporal organization of protein interactions in cell signaling is a fundamental process that drives cellular functions. Given differential protein expression across tissues and developmental stages, the architecture and dynamics of signaling interaction proteomes is, likely, highly context dependent. However, current interaction information has been almost exclusively obtained from transformed cells. In this study, we applied an advanced and robust workflow combining mouse genetics and affinity purification (AP)-SWATH mass spectrometry to profile the dynamics of 53 high-confidence protein interactions in primary T cells, using the scaffold protein GRB2 as a model. The workflow also provided a sufficient level of robustness to pinpoint differential interaction dynamics between two similar, but functionally distinct, primary T cell populations. Altogether, we demonstrated that precise and reproducible quantitative measurements of protein interaction dynamics can be achieved in primary cells isolated from mammalian tissues, allowing resolution of the tissue-specific context of cell-signaling events.

INTRODUCTION

Dynamic organization of protein-protein interactions in signaling networks is essential to coordinate cellular functions in response to extrinsic and intrinsic signals. Affinity purification coupled with

mass spectrometry (AP-MS) has been the method of choice to identify protein-protein interactions and protein complexes in various model systems (Hauri et al., 2013; Glatter et al., 2011). The majority of AP-MS studies to date used epitope-tagged bait proteins expressed exogenously in transformed cell lines. The use of exogenous bait expression may, in most cases, result in the correct identification of physiological binding partners, but the measured binding stoichiometries are likely to be affected upon exogenous overexpression compared to the corresponding endogenous protein. One other drawback is connected to the usage of transformed cell lines. Although cell lines provide many advantages in terms of flexibility and scalability, they may not reflect molecular processes and signaling events occurring in vivo under physiological conditions (Astoul et al., 2001). Cellular transformation, clonal selection of cell lines, and adaptation to in vitro cell-culture conditions result in changes in protein abundances as well as in posttranslational modifications, which, in turn, are likely to affect the quality and kinetic behavior of signaling interaction networks as compared to primary cells. Therefore, it remains difficult to extend the conclusions reached in such cell lines to primary cells. Moreover, a given signaling pathway often operates in different cell types or at different developmental stages. For instance, the T cell antigen receptor (TCR) functions both in the thymus during T cell development and in mature T cells found in secondary lymphoid organs. It may, therefore, be hazardous to use models of TCR signaling established in mature T cells to interpret results corresponding to developing T cells (Fu et al., 2014). To circumvent these limitations, we have developed knockin mice that bear an epitope tag that permits AP-MS of protein complexes isolated from primary cells belonging to various tissues or representing various developmental stages (Roncagalli et al., 2014).



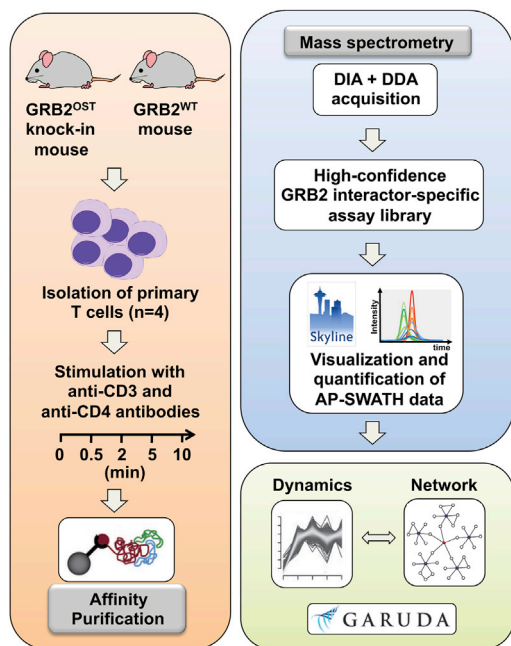


Figure 1. AP-SWATH Workflow Schematic for Mapping the Composition and Dynamics of the GRB2 Interactome in Primary T Cells

(Left) Overview of affinity purification (AP) of primary mouse T cells isolated from WT mice (GRB2^{WT}) and from knockin mice expressing endogenous GRB2 tagged with a One-STrEP-tag (OST) (GRB2^{OST}). T cells were isolated before or after stimulation for 0.5, 2, 5, and 10 min with anti-CD3 and anti-CD4 antibodies followed by affinity purification of GRB2 protein complexes using Strep-Tactin Sepharose beads. (Upper right) Overview of MS analysis. Affinity-purified samples were acquired in both DIA/SWATH and DDA/shotgun modes (for a detailed description, see [Aebersold and Mann, 2016](#); [Gillet et al., 2016](#)). Data were used to build a high-confidence GRB2 interactor-specific assay library. Visualization of AP-SWATH data, quantification, and statistics analysis were performed in Skyline. (Lower right) Clustering of interaction dynamics and network-based analysis were performed using the Garuda platform, a community-driven software platform that supports reproducibility of computational analysis from complex high-dimensional data. See also [Figures S1 and S2](#).

Growth-factor-receptor-bound protein 2 (GRB2) is an essential adaptor protein made of one SH2 domain and two SH3 domains. GRB2 interacts through its central SH2 domain with phosphorylated tyrosines found in the cytoplasmic tail of activated tyrosine kinase receptors (RTKs) ([Songyang et al., 1994](#)), linking them to Son of Sevenless (SOS), a family of guanine nucleotide exchange factors (GEFs) that act on Ras small GTPases and regulate the mitogen-activated protein kinase (MAPK) signaling pathway ([McCormick, 1993](#)). In T lymphocytes, GRB2 is also part of the TCR signaling network and involved in both the control of T cell development and the activation of mature T cells ([Jang et al., 2009](#)). Given the central role played by GRB2 in signal initiation and diversification, knowledge of the composition and dynamics of the signalosomes that form around it in distinct signaling cascades and cell types is, thus, key to understanding the scope of its actual functions. We, therefore, selected GRB2 as a model for evaluating whether SWATH

(sequential window acquisition of all theoretical fragment ion spectra)-MS ([Gillet et al., 2012, 2016](#)) could enable rapid, reliable, and accurate quantitative analysis of protein interaction dynamics in two types of primary cells that were extemporaneously isolated from mouse ([Figure 1](#)).

RESULTS

Mapping the GRB2 Interactome in Peripheral CD4⁺ T Cells

To identify the proteins that interact with GRB2 prior to or after TCR-mediated activation of primary mouse T cells, we first generated a line of gene-targeted mice expressing a One-STrEP-tag (OST) at the carboxyl terminus of endogenous GRB2 proteins (called GRB2^{OST} mice) ([Figure S1A](#)). We showed that primary T cells from GRB2^{OST} mice are normal and amenable to AP-SWATH analysis ([Figure S1](#); [Supplemental Experimental Procedures](#)). We then measured the abundance of affinity-purified proteins from GRB2^{OST} mice and compared it with their corresponding abundances from AP using wild-type (WT) control mice, which do not express the OST affinity tag. CD4⁺ primary T cells from GRB2^{OST} and WT mice were lysed before or after activation with anti-CD3 and anti-CD4 antibodies for 0.5, 2, 5, and 10 min and subjected to single-step AP and subsequent MS analysis. Our MS workflow involved data-dependent acquisition (DDA) for protein identification and generation of a spectral library containing 3,577 target peptides and 25,356 transitions, which we used for targeted analysis of the acquired data-independent acquisition (DIA) data. Among the 658 proteins identified with a false discovery rate (FDR) <1%, 53 qualified as high-confidence GRB2 interactors based on their enrichment in GRB2^{OST} relative to WT control purifications (for details on filtering, see the [Supplemental Experimental Procedures](#)).

Taking into account already described physical protein-protein interactions and incorporating protein functionalities and data provided by the literature allowed us to highlight protein modules potentially relevant to understanding the GRB2 roles ([Figure 2](#); [Data S1](#)). Although the CD4⁺ T cells used in this study have been solely stimulated via the TCR and CD4, the proteins associated with GRB2 following TCR-CD4 engagement contained several transmembrane receptors distinct from the TCR. The intracytoplasmic segment of most of them constitutes substrates for protein tyrosine kinase and may have thus provided docking sites for the GRB2 SH2 domain. Consistent with published reports, ITB2, a subunit of the integrin LFA-1, was part of the GRB2 interactome. Interestingly, LEUK (also known as CD43 or leukosialin) and the CD5 and CD6 cell-surface receptor constituted additions to the GRB2 interactome. Following TCR-CD4 engagement, GRB2 also interacted with the transmembrane adaptors LAT and LAX, the SLP76 (also known as LCP2) and GRAP2 cytosolic adaptors, and the GEFs SOS1 and SOS2 and VAV1 and VAV3, reinforcing the view that GRB2 connects several receptors expressed at the surface of CD4⁺ T cells to key players of T cell activation. The GRB2 interactome also comprised proteins involved in endocytosis (WIPF1 and SH3K1), actin cytoskeleton remodeling (the GTPase-activating proteins [GAPs] ARAP1 and the adaptor SHC1), and lysosomal

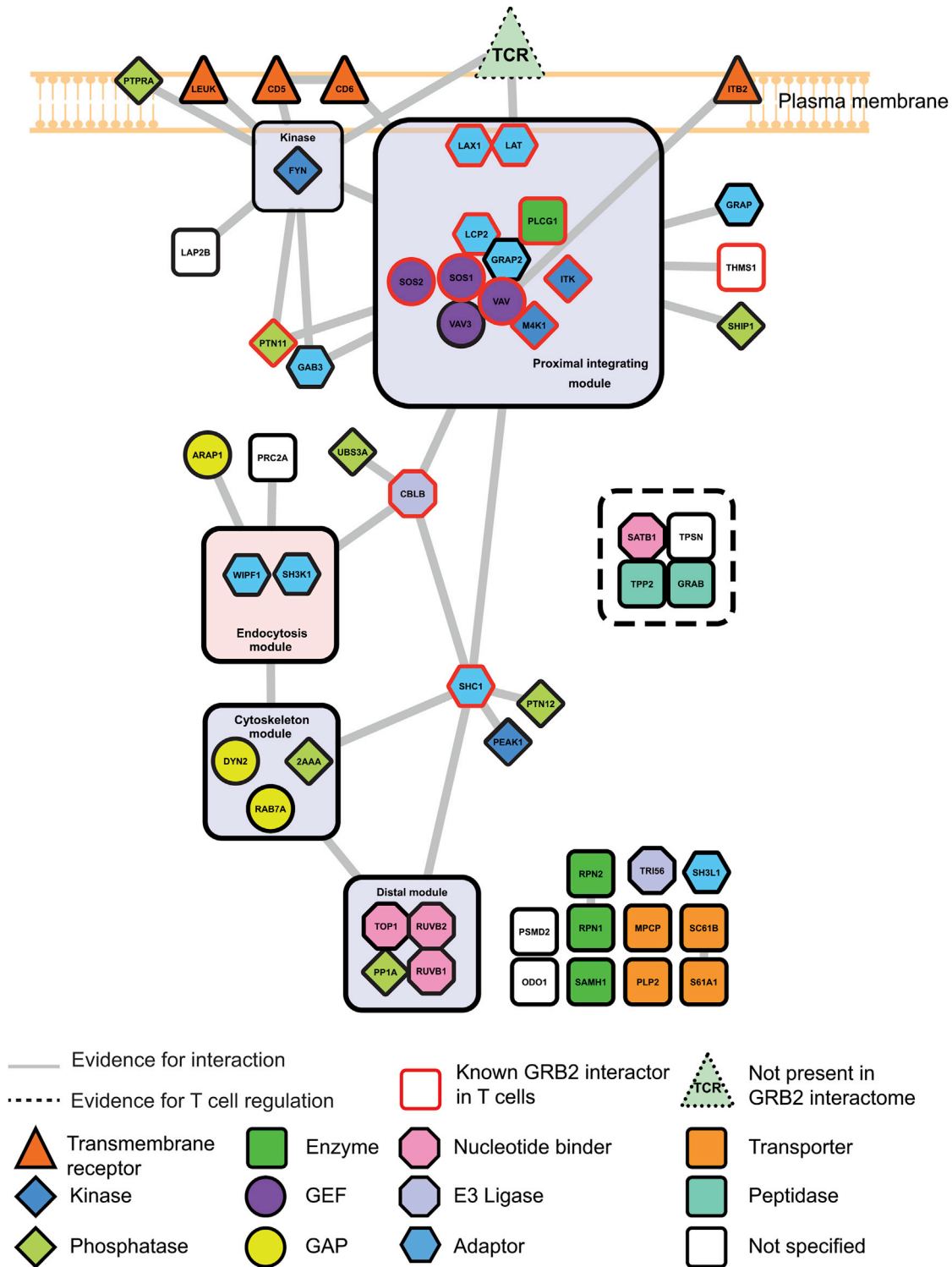


Figure 2. The GRB2 Interactome in Peripheral CD4⁺ T Cells

The advanced workflow applied in this study enabled the identification of 53 high-confidence direct or indirect GRB2 interactors in resting and activated CD4⁺ T cells. Proteins were classified according to their function or protein family (see key). GRB2 interactors that have been previously identified in T cells from public databases are border painted in red. Components of modules are defined by the degree of interconnectivities of preys, subcellular localizations, and described functionalities. GAP, GTPase-activating protein; GEF, guanine-exchange factor.

See also [Figure S3](#) and [Data S1](#).

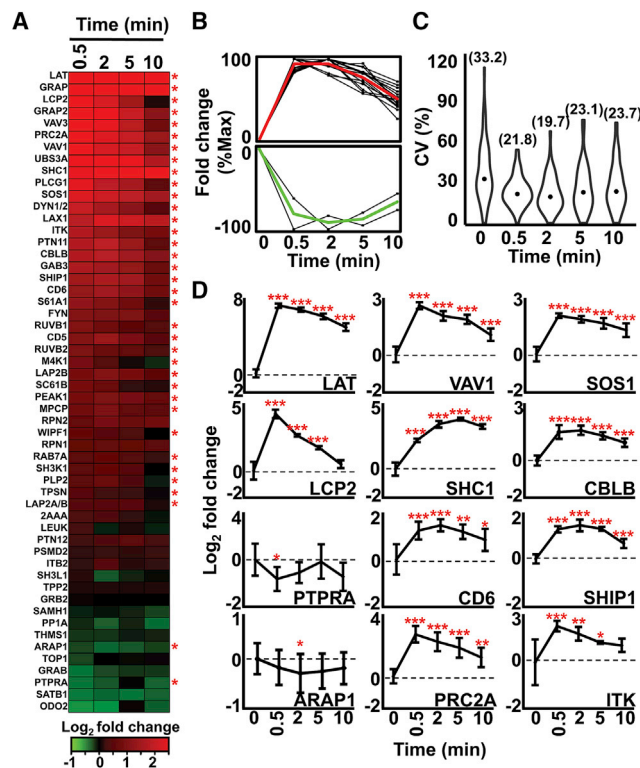


Figure 3. Precise and Reproducible Quantification of Proteins Interacting with GRB2 in Peripheral CD4⁺ T Cells

(A) The heatmap shows \log_2 fold change for 53 high-confidence GRB2 interactors upon stimulation of peripheral CD4⁺ T cells. Recruited, stable, and dissociated proteins are in red, black, and green, respectively. Statistically significant changes with adjusted p values < 0.05, for at least one time point, are indicated by the asterisks at the right of the map. Statistics were calculated in Skyline using MSstats.

(B) Dynamics of interactions were clustered using the Garuda software platform and normalized as the percentage of the maximal value for each kinetic. Representative clusters (i.e., cluster 1 and 7) are shown.

(C) Distribution of percent CV. Median CV is indicated in parentheses for each stimulation time point. Four biological replicates for each stimulation time point were used to evaluate biological reproducibility at protein level.

(D) Kinetics for 12 clustered and representative GRB2 interactors.

*Adjusted p < 0.05; **adjusted p < 0.01; ***adjusted p < 0.001. Error bars represent SD.

See also Figures S4 and S5 and Data S1.

degradation (the E3 ubiquitin-protein ligase CBLB). An AP-MRM-based study using EGFR (epidermal growth factor receptor)-stimulated fibroblasts also suggested that SHC1 acts as a cytoskeleton organizer through the recruitment of PTPN12 (also known as PTP-PEST) and PEAK1 (also known as Sgk269), both of them having also been found in the GRB2 interactome of primary T cells. Some GRB2 interactors can be grouped in a “distal module” (Figure 2) that is primarily made of proteins containing nucleotide-binding domains, the function of which remains to be established in the context of TCR signaling. Overall, 22 of the 53 high-confidence interactors have not been previously reported, and 41 of them have not been previously observed in T cells (Figure 2; Data S1). Whereas some of the

22 GRB2-interacting partners identified here have been reported to be involved in T cell activation (e.g., SATB1 and GRAB), several of them (RPN1/2, SH3L1, and SC61B) have not been characterized in the context of the TCR signaling pathway yet.

To independently confirm the GRB2 interactions identified through AP-SWATH, we performed co-immunoprecipitation (co-IP) and western blotting experiments and focused on CD5 and ARAP-1, two GRB2 partners identified in T cells for which commercial antibodies were available. Co-IP of CD5 and ARAP1 from cell lysates of WT CD4⁺ T cells stimulated with anti-CD3 plus anti-CD4 antibodies for 2 min independently validated the interaction between CD5 and ARAP-1 with GRB2 identified by AP-SWATH (Figure S3D). CD5 is an important organizer of ubiquitylation following TCR stimulation (Voisinne et al., 2016), and the identification of GRB2 within the CD5 signalosome further unveils its complexity. Taken together, these results and the ones provided by the AP-SWATH analysis of the GRB2^{OST} molecule delineate comprehensive maps of the GRB2 interactome in both resting and activated primary mouse CD4⁺ T cells.

Reproducible Quantitative Measurements of GRB2 Protein Interactions in Peripheral CD4⁺ T Cells

The development of methods that enable precise and robust quantitative measurements of protein abundances is important in facilitating statistics and downstream computational analysis for the identification of meaningful protein interaction patterns (Collins et al., 2013; Lambert et al., 2013). Generation of highly precise and reproducible AP-SWATH data from primary cells is, therefore, crucial for understanding dynamic complex formation at the physiological level. Here, we assessed the reproducibility of AP-SWATH analysis to quantify the dynamics of the GRB2 interactome 0.5, 2, 5, and 10 min after TCR-mediated T cell activation. Targeted analysis of AP-SWATH data was performed using a refined assay library consisting of 604 peptides and 4,020 transitions specific for GRB2 and 53 high-confidence GRB2 interactors identified earlier, followed by manual validation of the extracted peak groups in Skyline (MacLean et al., 2010) (Figure S3; Data S1). The 53 proteins were consistently quantified across the time series (Figures 3A and S4A), i.e., before and after T cell stimulation, in all four biological replicates, and the median coefficient variation (CV) ranged from 19.7% to 33.2%, a finding comparable to CVs calculated from AP-SWATH studies conducted using transformed cell lines (Collins et al., 2013; Lambert et al., 2013) (Figure 3C; Data S1). Of note, highly reproducible and accurate quantification was not compromised using a short liquid chromatography (LC) gradient of 30 min, thereby enhancing the throughput of time course experiments (Figure S4E). Therefore, rapid and robust quantitative measurements of high-confidence, time-resolved GRB2 protein interactions can be achieved from primary mouse CD4⁺ T cells.

Transparent Analysis of Time-Resolved GRB2 Protein Interactions in Peripheral CD4⁺ T Cells

Generation of robust quantitative measurements, together with transparency and reproducibility of downstream computational analysis—including statistics analysis—is fundamental

for rigorous validation of findings within the scientific community from complex high-dimensional data (Peng, 2011). Toward this goal, AP-SWATH data were analyzed in this study using two open-source software systems: the graphical user interface MSstats in Skyline for raw data analysis (Choi et al., 2014) and the Garuda platform for further data processing and visualization (Ghosh et al., 2011), both supporting reproducibility of statistics and computational analysis. Using these software tools, we generated heatmaps, protein clusters, and statistics demonstrating that protein assemblies of increasing complexity formed around GRB2 within the first seconds of T cell activation (Figures 3A, 3B, and S4). Among the clustered interactors (Figure S5), ~77% were recruited by GRB2 complexes post-stimulation, with significant fold changes ranging from 1.3 (TPSN; $p = 0.012$) to 118 (LAT; $p = 4 \times 10^{-11}$) when compared to unstimulated T cells (Data S1). More precisely, a subset of 18 interactors involving known components of the TCR signaling pathway (e.g., LAT, LCP2, SOS1, VAV1, and ITK) showed maximal association with GRB2 30 s post-stimulation and then disassembled from the bait with different kinetics (Figures 3D and S4). Interestingly, the adaptor SHC1 was the sole protein that significantly reached its maximal association with GRB2 at a later time point (fold change = 14.3, and $p = 4 \times 10^{-9}$ at 5 min after stimulation) (Figure 3D). In contrast, two proteins (ARAP1 and PTPRA) disassembled from GRB2 complexes after TCR stimulation (Figure 3D). Moreover, network-based analysis revealed a high level of functional interconnectivity between established components of the TCR signaling pathway and the clustered GRB2 interactors (Figure S5). Interestingly, PRC2A (Proline Rich Coiled-Coil 2A, also known as BAT2), a poorly characterized protein, strongly associated with GRB2 ~30 s after T cell activation (fold change = 6.1; $p = 3.8 \times 10^{-6}$) and slowly disassembled over time—a kinetic similar to the one observed for well-established components of the TCR signaling pathway, e.g., LAT, SOS1, VAV1, SLP-76/LCP2, and CBLB (Figure 3D). Since functionally related proteins may show similar kinetics of assembly-disassembly in response to cell stimulation (García-Marqués et al., 2016), this result suggests a role for PRC2A in TCR signaling. Collectively, these quantitative AP-SWATH data provided a systematic and accurate view of the temporal reorganization of the GRB2 protein interaction network after TCR-mediated activation of peripheral CD4⁺ T cells. Further experiments would be needed to assess the functional significance of these kinetics as well as the potential role of poorly characterized GRB2 interactors in TCR-mediated T cell activation.

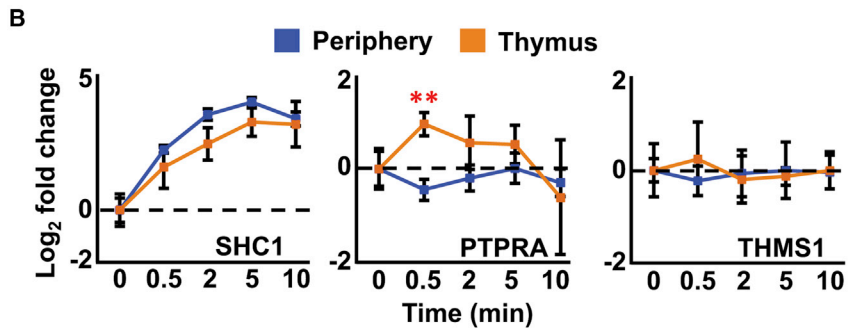
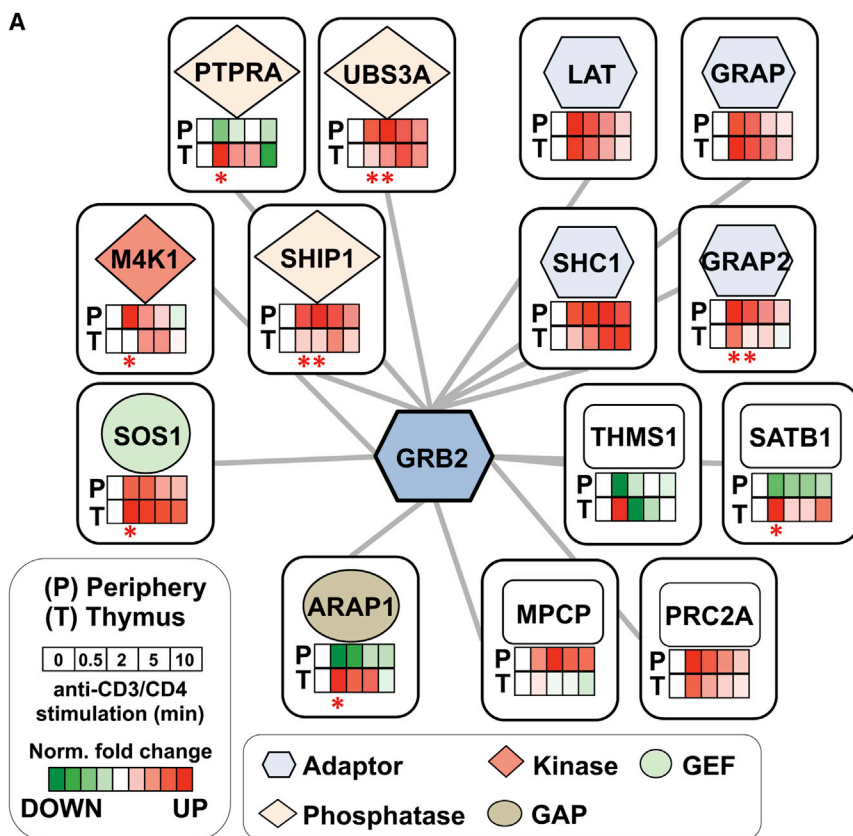
The Dynamics of Specific GRB2 Interactors Differ between Developing and Mature T Cells

T cell development occurs in the thymus and proceeds through discrete stages defined on the basis of the expression of CD4 and CD8 molecules. Immature double-negative (CD4⁻CD8⁻) thymocytes develop into double-positive (CD4⁺CD8⁺) thymocytes. After receiving TCR-mediated signals, a few CD4⁺CD8⁺ thymocytes mature further into CD4⁺ and CD8⁺ single-positive thymocytes that migrate to the periphery, where they give rise to mature CD4⁺ and CD8⁺ T cells. Considering that the TCR signals driving the differentiation of double-positive thymocytes are conveyed via GRB2 (Radtko et al., 2016) and that those

thymocytes constitute over 90% of the TCR⁺ CD4⁺ cells present in a thymus, we tested next whether the dynamics of the GRB2 interactome differ between developing and mature T cells following activation with anti-CD3 plus anti-CD4 antibodies. Thymocytes were purified from GRB2^{OST} mice and GRB2-OST protein complexes isolated prior to and at various time points after TCR stimulation. Three biological replicates were prepared for each time point as described earlier for mature CD4⁺ T cells. The corresponding GRB2^{OST} samples were subjected to SWATH-MS, and we concurrently analyzed the AP-SWATH datasets in Skyline for quantitative comparison using the established high-confidence GRB2-interactor-specific assay library (Data S1). Among the proteins that constituted the GRB2 interactome, only 14 GRB2 interactors were consistently detected in both developing and mature T cells and can, thus, be used for comparative analysis across the entire kinetic (Figures 4 and S6; Data S1). The number of GRB2 interactors identified in both mature and developing T cells is relatively low, and further experiments would be needed to evaluate whether many high-confidence GRB2 interactors in developing T cells were lost during the experimental procedures. Nevertheless, similar temporal profiles were observed between developing and mature T cells for 6 of the 14 time-resolved GRB2 interactors (LAT, GRAP, MPCP, PRC2A, SHC1, and THMS1) (Figures 4 and S6; Data S1 and S2). For instance, SHC1 associated with GRB2 in a progressive fashion in both mature and developing T cells and reached maximal interaction with GRB2 5 min post-TCR activation in both T cell populations (Figure 4B). Interaction profiles between GRB2 and THEMIS remained relatively stable across the time series in both mature and developing T cells (Figure 4B). In contrast, ARAP1, GRAP2, M4K1, PTPRA, SATB1, SHIP1, SOS1, and USB3A showed a significant differential kinetics of GRB2 association between developing and mature T cells for at least one stimulation time point (Figures 4 and S6; Data S1). For instance, the association of the receptor-protein tyrosine phosphatase PTPRA with GRB2 transiently increased in a significant manner ~30 s after stimulation of developing T cells (fold change = 1.94, $p = 0.005$), whereas a slight but significant transient dissociation of PTPRA and GRB2 was found in peripheral CD4⁺ T cells (fold change = -1.31, $p = 0.03$). Interestingly, this particular kinetic pattern was also observed with SATB1 and ARAP1 (Figure S6). This observation might suggest the existence of a complex that involves GRB2, PTPRA, SATB1, and ARAP1, since correlations in protein association with a given bait as a function of time of TCR stimulation support the occurrence of physical association between them (Voisinne et al., 2016). Although further experiments would be needed to test this hypothesis, our results led us to conclude that the workflow presented in this study provided a sufficient level of quantitative accuracy to distinguish similar and differential protein interaction dynamics between two functionally distinct primary T cell populations.

DISCUSSION

Canonical signaling pathways, as defined by the analysis of transformed cell lines grown in vitro, do not reflect the properties of cell-signaling systems operating in vivo in primary cell types of



our tissues. Given differential protein expression across tissues, it is conceivable that a canonical core pathway that acts in different tissues may operate in a context-specific fashion, leading to tissue-specific differences in the quality and kinetics of processes controlled by the signaling system. This, in turn, may cause differential phenotypic consequences in response to the same cellular signal. Systematic analysis of context-dependent properties of signaling systems is, therefore, essential for rationalizing and predicting differential phenotypic outcome in response to the same signals across different tissues. Specific and dynamic formation of protein-protein interaction represents a key mechanism for regulating properties of cellular signaling. However, building pathway models that correctly reflect the properties of a signaling system in primary cells on the basis of public protein interaction data is compromised by the shortcomings of established methods to systematically retrieve protein interaction data.

Here, we introduced a workflow that combines genetic engineering and SWATH-MS to address these shortcomings. Using the SH2 and SH3 domains containing versatile signaling adaptor GRB2 as a model, we could demonstrate that the presented method provided a sufficient level of precision and robustness to accurately probe the remodeling of signaling complexes following the activation of primary T cells and established context dependencies of GRB2-associated signaling in developing and mature T cells. We anticipate that our generic method could be broadly applied to rapidly expedite the robust temporal profile of protein interactomes from a range of cell and tissue types. When combined with the recent possibility to edit the mouse genome in a fast-track manner via CRISPR/Cas9 (Yang et al., 2013), our approach will permit the deciphering of how tissue-specific context impacts cell-signaling events at the organismal level.

Figure 4. Quantitative Comparison between the Dynamics of GRB2 Protein Complexes in Developing versus Mature Primary T Cells

(A) The GRB2 protein-protein interaction network displays the association of time-dependent proteins following anti-CD3 and anti-CD4 stimulation in mature/peripheral CD4⁺ T cells (P) and developing/thymocytes (T). Nodes represent 15 proteins, including GRB2, that were consistently detected and reproducibly quantified in both peripheral CD4⁺ T cells and thymocytes. Rectangles inside the nodes show the normalized (Norm.) log₂ fold change for each time point as the percentage of the maximal (red) or minimal value (green). The significantly different GRB2 protein interactions between the two cell types, as determined by MSstats, are indicated by an asterisk (*adjusted p < 0.05).

(B) Quantitative temporal profiling of three representative GRB2 interactors upon activation of peripheral T cells (blue) or thymic T cell (orange). The significantly different GRB2-PTPRA interaction, as determined by MSstats, between the two cell types at 0.5 min post-stimulation is indicated (**adjusted p < 0.01).

Error bars represent SD. See also Figure S6 and Data S1.

Most systematic protein-protein interactions studies, to date, do not address the dynamic nature of protein complex formation. Moreover, the vast majority of data on protein interactions has been obtained by the analysis of a heterogeneous set of transformed cell lines, which complicates the development of coherent pathway models. Altogether, cell signaling depends on tissue-context-dependent formation of transient signaling complexes, but precise, quantitative, and reproducible information on context-specific complex formation is vastly missing in the literature.

EXPERIMENTAL PROCEDURES

A brief summary of experimental procedures is provided in the following text (refer to the [Supplemental Information](#) for detailed procedures).

Generation of GRB2^{OST} Mice

Knockin mice expressing endogenous GRB2 proteins tagged at their carboxyl terminus with an OST were generated as described in the [Supplemental Experimental Procedures](#). Mice were maintained in specific pathogen-free conditions, and all experiments were done in accordance with institutional committees and French and European guidelines for animal care.

Stimulation of Isolated Primary T Cells and AP of Protein Complexes

CD4⁺ T cells were isolated from pooled lymph nodes and spleens with a Dynabeads Untouched Mouse CD4⁺ T Cell Kit and were stimulated for 0.5, 2, 5, and 10 min with anti-CD3 and anti-CD4 antibodies, followed by AP of GRB2 protein complexes using Strep-Tactin Sepharose beads. Detailed protocols are provided in the [Supplemental Experimental Procedures](#).

MS

Data acquisition (DDA and DIA modes), assay library generation, and targeted extraction of AP-SWATH data were performed as described previously (Collins et al., 2013; Schubert et al., 2015), using the Skyline software. Details of the procedures are provided in the [Supplemental Experimental Procedures](#).

Filtering Criteria for the Identification of High-Confidence GRB2 Interactors

High-confidence GRB2 interactors were identified using a three-step filtering with both DDA and SWATH AP-MS data, followed by manual validation of high-confidence GRB2 interactors in Skyline (see [Figures S2](#) and [S3](#)). Details of the procedures are provided in the [Supplemental Experimental Procedures](#).

Statistics and Computational Analysis

Statistical and computational analyses were performed using MSstats in Skyline (Broudy et al., 2014; Choi et al., 2014) and the Garuda platform (Ghosh et al., 2011). Both Skyline and Garuda are open-source software systems supporting the reproducibility of statistics and computational analysis by the scientific community. Details can be found in the [Supplemental Experimental Procedures](#).

ACCESSION NUMBERS

The accession number for the MS shotgun data (centroided mzXML and identified peptides in a pepXML report), which were used to generate the spectral and assay libraries reported in this paper is PRIDE: PXD003973 (Vizcaino et al., 2013). The accession number for the SWATH-MS data (instrument raw/wiff files and identified peptides in an OpenSWATH report) reported in this paper is PRIDE: PXD003972. Skyline files are available for AP-SWATH data analysis at the Panorama Public website: https://panoramaweb.org/labkey/publication_APSWATH_GRB2.url. Packaged Garuda gadgets and recipe documents are available at <https://www.dropbox.com/s/w2xafks09tfwdpk/GarudaDataRecord.zip?dl=0>.

SUPPLEMENTAL INFORMATION

Supplemental Information includes Supplemental Experimental Procedures, six figures, and two data files and can be found with this article online at <http://dx.doi.org/10.1016/j.celrep.2017.03.019>.

AUTHOR CONTRIBUTIONS

E.C. and R.R. generated and analyzed the data and wrote a draft of the manuscript; M.G.M. and S.D. prepared MS samples; B.M. supervised the generation of the GRB2^{OST} mice; I.F.-M., A.G.-B., T.S., and M.H. generated and analyzed some of the data; W.E.W., M.C., T.W., S.G., T.H., and B.C.C. analyzed the data; R.S., M.M., H.K., and R.A. provided key insights. B.M.

and M.G. designed the study and finalized the writing of the manuscript with contributions from all authors.

ACKNOWLEDGMENTS

We thank Frédéric Fiore, Elodie Caccamo-Garcia, and Fabien Danjan for the construction of GRB2^{OST} mice. We thank Ludovic Gillet and Yansheng Liu for instrument maintenance, as well as all members of the Aebersold laboratory for discussions. We thank Jianmin Wu for technical support with the PINA database. This work was supported by CNRS, INSERM, the European Research Council (FP7/2007–2013 grant no. 322465 [“Integrate”] to B.M.), and the Agence Nationale de la Recherche (PHENOMIN project to B.M.). R.A. acknowledges the following grant support: TBVAC2020 (2-73838-14), ERC grant Proteomics v3.0 (ERC-2008-AdG_20080422), ERC Proteomics 4D (670821), and the Swiss National Science Foundation (3100A0-688 107679). M.G. acknowledges the support by the Innovative Medicines Initiative project ULTRA-DD (FP07/2007-2013, grant no. 115766). B.M. and R.A. acknowledge the support of the MSDAVENIR Fund.

Received: February 9, 2017

Revised: February 28, 2017

Accepted: March 3, 2017

Published: March 28, 2017

REFERENCES

- Aebersold, R., and Mann, M. (2016). Mass-spectrometric exploration of proteome structure and function. *Nature* 537, 347–355.
- Astoul, E., Edmunds, C., Cantrell, D.A., and Ward, S.G. (2001). PI 3-K and T-cell activation: limitations of T-leukemic cell lines as signaling models. *Trends Immunol.* 22, 490–496.
- Broudy, D., Killeen, T., Choi, M., Shulman, N., Mani, D.R., Abbatiello, S.E., Mani, D., Ahmad, R., Sahu, A.K., Schilling, B., et al. (2014). A framework for installable external tools in Skyline. *Bioinformatics* 30, 2521–2523.
- Choi, M., Chang, C.-Y., Clough, T., Broudy, D., Killeen, T., MacLean, B., and Vitek, O. (2014). MSstats: an R package for statistical analysis of quantitative mass spectrometry-based proteomic experiments. *Bioinformatics* 30, 2524–2526.
- Collins, B.C., Gillet, L.C., Rosenberger, G., Röst, H.L., Vichalkovski, A., Gstaiger, M., and Aebersold, R. (2013). Quantifying protein interaction dynamics by SWATH mass spectrometry: application to the 14-3-3 system. *Nat. Methods* 10, 1246–1253.
- Fu, G., Rybakina, V., Brzostek, J., Paster, W., Acuto, O., and Gascoigne, N.R.J. (2014). Fine-tuning T cell receptor signaling to control T cell development. *Trends Immunol.* 35, 311–318.
- García-Marqués, F., Trevisan-Herraz, M., Martínez-Martínez, S., Camafeita, E., Jorge, I., Lopez, J.A., Méndez-Barbero, N., Méndez-Ferrer, S., Del Pozo, M.A., Ibáñez, B., et al. (2016). A novel systems-biology algorithm for the analysis of coordinated protein responses using quantitative proteomics. *Mol. Cell. Proteomics* 15, 1740–1760.
- Ghosh, S., Matsuoka, Y., Asai, Y., Hsin, K.Y., and Kitano, H. (2011). Software for systems biology: from tools to integrated platforms. *Nat. Rev. Genet.* 12, 821–832.
- Gillet, L.C., Navarro, P., Tate, S., Röst, H., Selevsek, N., Reiter, L., Bonner, R., and Aebersold, R. (2012). Targeted data extraction of the MS/MS spectra generated by data-independent acquisition: a new concept for consistent and accurate proteome analysis. *Mol. Cell. Proteomics* 11, O111.016717.
- Gillet, L.C., Leitner, A., and Aebersold, R. (2016). Mass Spectrometry Applied to Bottom-Up Proteomics: Entering the High-Throughput Era for Hypothesis Testing. *Annu. Rev. Anal. Chem. (Palo Alto, Calif.)* 9, 449–472.
- Glatter, T., Schittenhelm, R.B., Rinner, O., Roguska, K., Wepf, A., Jünger, M.A., Köhler, K., Jevtov, I., Choi, H., Schmidt, A., et al. (2011). Modularity and hormone sensitivity of the *Drosophila melanogaster* insulin receptor/target of rapamycin interaction proteome. *Mol. Syst. Biol.* 7, 547.

- Hauri, S., Wepf, A., van Droegen, A., Varjosalo, M., Tapon, N., Aebersold, R., and Gstaiger, M. (2013). Interaction proteome of human Hippo signaling: modular control of the co-activator YAP1. *Mol. Syst. Biol.* *9*, 713.
- Jang, I.K., Zhang, J., and Gu, H. (2009). Grb2, a simple adapter with complex roles in lymphocyte development, function, and signaling. *Immunol. Rev.* *232*, 150–159.
- Lambert, J.P., Ivosev, G., Couzens, A.L., Larsen, B., Taipale, M., Lin, Z.Y., Zhong, Q., Lindquist, S., Vidal, M., Aebersold, R., et al. (2013). Mapping differential interactomes by affinity purification coupled with data-independent mass spectrometry acquisition. *Nat. Methods* *10*, 1239–1245.
- MacLean, B., Tomazela, D.M., Shulman, N., Chambers, M., Finney, G.L., Frewen, B., Kern, R., Tabb, D.L., Liebler, D.C., and MacCoss, M.J. (2010). Skyline: an open source document editor for creating and analyzing targeted proteomics experiments. *Bioinformatics* *26*, 966–968.
- McCormick, F. (1993). Signal transduction. How receptors turn Ras on. *Nature* *363*, 15–16.
- Peng, R.D. (2011). Reproducible research in computational science. *Science* *334*, 1226–1227.
- Radtke, D., Lacher, S.M., Szumilas, N., Sandrock, L., Ackermann, J., Nitschke, L., and Zinser, E. (2016). Grb2 is important for T cell development, Th cell differentiation, and induction of experimental autoimmune encephalomyelitis. *J. Immunol.* *196*, 2995–3005.
- Roncagalli, R., Hauri, S., Fiore, F., Liang, Y., Chen, Z., Sansoni, A., Kanduri, K., Joly, R., Malzac, A., Lähdesmäki, H., et al. (2014). Quantitative proteomics analysis of signalosome dynamics in primary T cells identifies the surface receptor CD6 as a Lat adaptor-independent TCR signaling hub. *Nat. Immunol.* *15*, 384–392.
- Schubert, O.T., Gillet, L.C., Collins, B.C., Navarro, P., Rosenberger, G., Wolski, W.E., Lam, H., Amodei, D., Mallick, P., MacLean, B., and Aebersold, R. (2015). Building high-quality assay libraries for targeted analysis of SWATH MS data. *Nat. Protoc.* *10*, 426–441.
- Songyang, Z., Shoelson, S.E., McGlade, J., Olivier, P., Pawson, T., Bustelo, X.R., Barbacid, M., Sabe, H., Hanafusa, H., Yi, T., et al. (1994). Specific motifs recognized by the SH2 domains of Csk, 3BP2, fps/fes, GRB-2, HCP, SHC, Syk, and Vav. *Mol. Cell. Biol.* *14*, 2777–2785.
- Vizcaino, J.A., Côté, R.G., Csordas, A., Dianes, J.A., Fabregat, A., Foster, J.M., Griss, J., Alpi, E., Birim, M., Contell, J., et al. (2013). The PRoteomics IDentifications (PRIDE) database and associated tools: status in 2013. *Nucleic Acids Res.* *41*, D1063–D1069.
- Voisinne, G., García-Blesa, A., Chaoui, K., Fiore, F., Bergot, E., Girard, L., Malissen, M., Buriel-Schiltz, O., Gonzalez de Peredo, A., Malissen, B., and Roncagalli, R. (2016). Co-recruitment analysis of the CBL and CBLB signalosomes in primary T cells identifies CD5 as a key regulator of TCR-induced ubiquitylation. *Mol. Syst. Biol.* *12*, 876.
- Yang, H., Wang, H., Shivalila, C.S., Cheng, A.W., Shi, L., and Jaenisch, R. (2013). One-step generation of mice carrying reporter and conditional alleles by CRISPR/Cas-mediated genome engineering. *Cell* *154*, 1370–1379.